



Changzhou Kodi Machinery Co.,Ltd.

www.kodichina.com

Quality creates brand
Integrity of future success



中国 · 江苏 JIANSU · CHINA

常规双层玻璃反应釜 Conventional double-layer glass reactor



常规双层玻璃反应釜 ▶▶ |||||
Conventional double-layer glass reactor
PGR1L-100L系列

功能：

玻璃反应釜为双层玻璃设计，内层放入反应溶媒，可做搅拌反应，夹层可通上不同的冷热源(冷冻液。热水或热油)做循环加热或冷却反应。在设定恒温条件下，密封的玻璃反应釜内，可根据使用要求在常压或负压条件下进行搅拌反应，并能进行反应溶液的回流与蒸馏，是现代精细化工、生物制药和新材料合成的理想中试、生产设备。

Features:

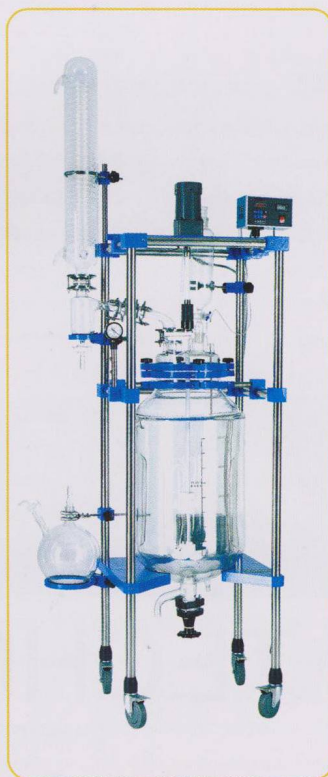
Glass reactor was double-glass design, the inner into the reaction solvent, stirring to do, mezzanine can be hot and cold through different sources (frozen liquid. Hot water or hot oil) to do heating or cooling cycle response. The set temperature conditions, the sealed glass reaction vessel, according to requirements in the atmospheric pressure or negative pressure stirred under the conditions and return to the reaction solution and distilled, is a modern fine chemical, biological pharmacy and new synthesis of the ideal test, production equipment.



PGR 1L-3L系列



PGR-5L系列



PGR 10L-50L系列



PGR 80L-100L系列



常规双层玻璃反应釜

Conventional double-layer glass reactor
PGR1L-100L系列

技术特点:

- ◆ 整体不锈钢立柱移动式框架结构，多口反应釜盖，具回流、加液、测温等全套玻璃配件。
- ◆ 选用G3.3高硼硅玻璃，具有良好的化学、物理性能。
- ◆ 合金机械密封，聚四氟乙烯连接口，保持在工作状态下的高精度密封。
- ◆ Pt100传感器探头，测温精度高，误差小，不易折断，有效提高工作效率。
- ◆ 日本技术交流齿轮减速电机，强扭力，无噪声。
- ◆ 双聚四氟乙烯搅拌桨，适用于低至高粘度液体的搅拌与混合。
- ◆ 聚四氟乙烯反应釜底料阀，可活动接口，具有反应无死角，出料彻底快捷等特点。

Features:

- ◆ the overall framework of stainless steel column mobile, multi-port reactor lid, with reflux, add fluid, temperature and other full glass accessories.
- ◆ use G3.3 borosilicate glass, with good chemical and physical properties.
- ◆ alloy mechanical seal, PTFE connector, remained at work under the high-precision sealing.
- ◆ Pt100 sensor probes, temperature measurement, high precision, small error and difficult to break, to effectively improve work efficiency.
- ◆ Japanese technology exchange gear motor, high torque, no noise.
- ◆ Double Teflon stirring paddle for stirring low to high viscosity liquids and mixed.
- ◆ Teflon reactor bottom valve discharge may be active interface, a reaction no dead ends, the material quickly and so thoroughly.



智能变频器
控制箱

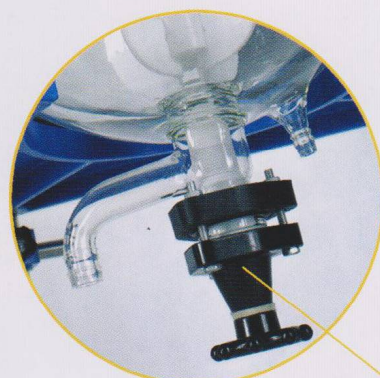
新型分水器
带缓冲四氟软节



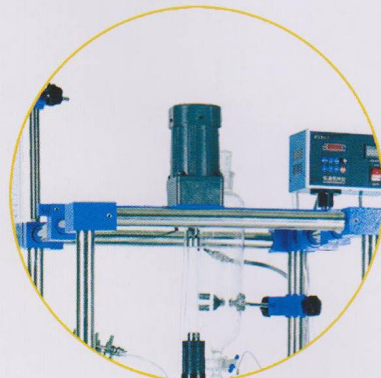
固体加料口

合金机械密封

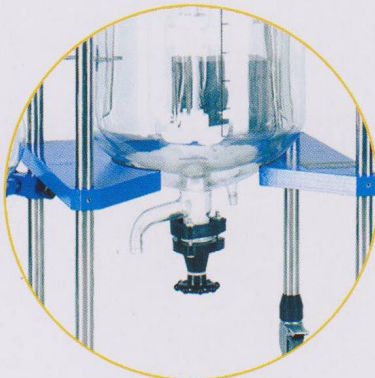
Pt100测温
(德国ABB)



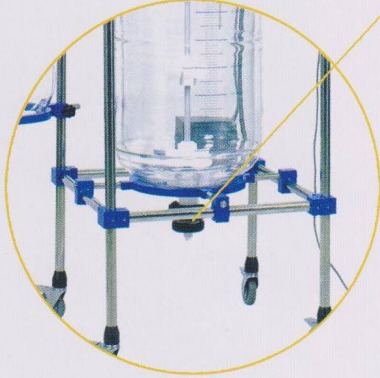
新型釜底放料截止阀
确保放料更快捷彻底无死角



日本技术交流齿轮减速电机
强扭力无噪音



整体铝合金托盘
稳定强度高





防爆系列、双层玻璃反应釜、旋转蒸发器 ▶▶|||||||

FPGR防爆 10L-100L系列



FPGR防爆 10L-100L



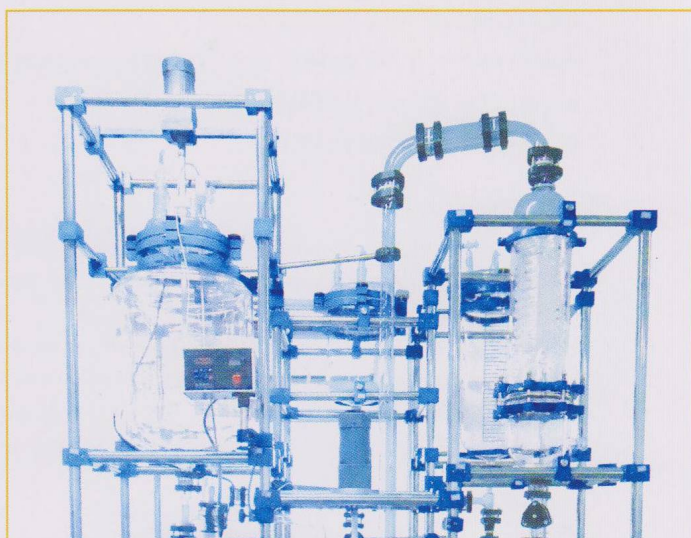
防爆控制箱



防爆装置



E 成套单元中试装置系列 ▶▶|||||||



PGR系列

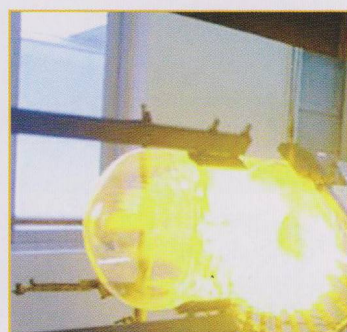
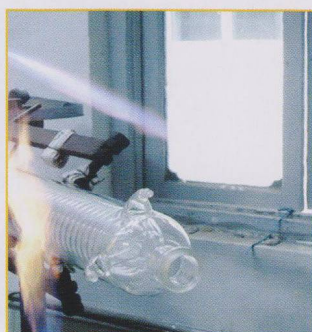
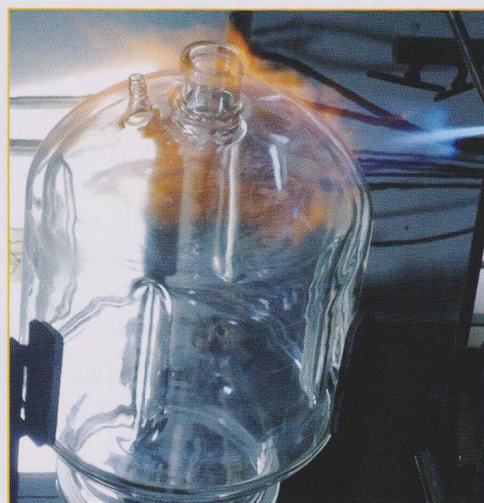
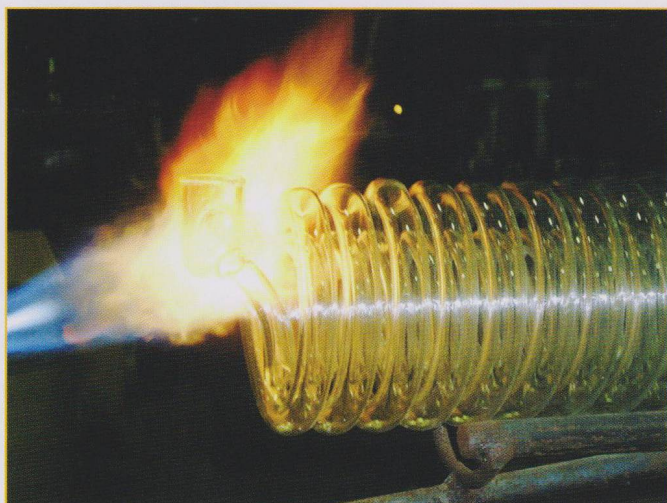
PGR系列

说明：本公司可根据用户不同的工艺要求，设计制造各种成套多功能中试装置，并负责安装调试。



操作展示 ▶▶|||

Operating display



Quality first 质量为先 |||

Reputation as the most important 信誉为重

